

LOADRITE ROAD BOSS

Introducing the new
road maintenance reporting
solution from Loadrite.



LOADRITE

The Ultimate in Onboard Weighing Systems

The new road maintenance reporting solution.

The Loadrite Road Boss combines the ease of use of our loader scales, with intuitive and powerful reporting software that gives you the power to manage your inventory and ease your billing and compliance reporting requirements.

The Loadrite Road Boss features the reliable Loadrite console, tested to withstand the rugged environments it operates in. The user interface has been customized for operators loading out trucks for de-icing or road repair operations, with large easy to use buttons and a back-lit screen for low light conditions.

Loadrite's Road Boss Material Management System (MMS) software gives you the flexibility to capture load data either wirelessly or by data module for further analysis. You can then rapidly and simply generate reports from your PC, enabling you to track stockpile inventory, report on product usage for billing and compliance requirements and more.

Inventory control

Track the tonnage of products going out of or coming into your yard stockpiles and report on stock movements and the amount of product in any stockpile at any time. Reports can be run by day, week, month or preferred time period.

Compliance Reporting

For road de-icing operations in winter months, report on the tonnage per lane mile for each truck involved in your operation.

Billing Reporting

The Truck, Contract & Job reports allow you to keep track of how much material has been loaded out to each truck, contractor or for each contract that you manage. During summer operations when you bill product usage by job ID, you can also run reports that detail how much of each type of product has been used for every job.

Increase loader and truck productivity

Determine current productivity levels for your loading and trucking operation by reporting on tonnage per hour and cycle times of each loader and truck in your operation. This allows you to confirm whether your operation is keeping up your required levels of production and allows you to make changes if necessary. Gain visibility of the working hours for each loader and truck, allowing you to confirm that operators are working the required hours.

Improve Maintenance Scheduling

Allows you to schedule plant maintenance based on the tonnage your equipment actually lifts or hauls. You can also schedule on the number of lifts or hauls they perform and not just by the engine hours they run.



The Loadrite Road Boss's features include:

- Data Field list updating direct from Road Boss MMS via the Loadrite Data Module
- Multiple point weighing: an error alarm sounds to alert the operator if uneven surfaces or speeds affect the weight accuracy
- Auto target function: the operator can recall a truck's maximum load weight from memory
- Auto tare function: the operator can recall a truck's tare weight from memory
- Error alarms: alerts the operator if the bucket load will exceed the truck's target weight or if the lifted weight exceeds the maximum amount that the machine is normally capable of lifting
- Unit conversion: lets you view the lifted weight in either imperial or metric measurements and converts weight to a volumetric measure
- Tip-off weighing: allows you to tip a measured amount of the product off the last bucket to ensure an exact

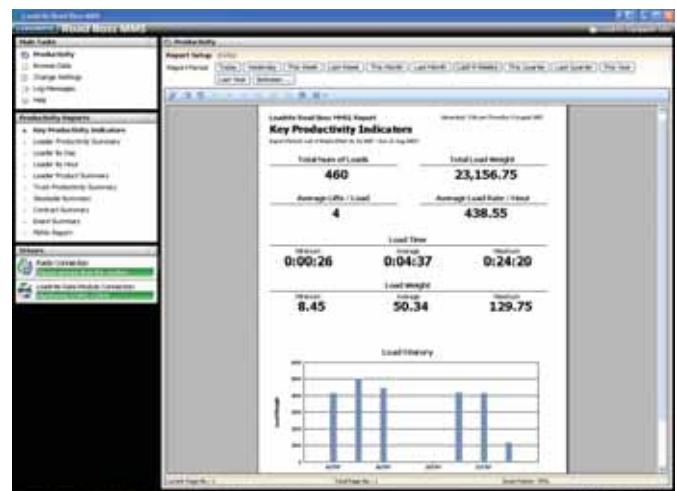
target weight is reached

- Zeroing: helps avoid inaccurate readings if wet or sticky materials build up in the bucket
- Auto-add mode: automatically adds the lifted weight to the total every time a load is lifted
- Remote add button (optional): ergonomically designed and mounted closely to the loader controls, so the load can be added at the press of a button
- Physical features: large easily visible LCD display and keys with backlighting for night and low light operation
- Clock: provides time and date information as well as alarm clock feature



The Loadrite Road Boss MMS's features include:

- Two step report generation: just select the report type and then select the period
- Download data fields directly to the Road Boss console using the Loadrite Data Module
- Remote access for reporting across your company's network
- Easy-to-use database with:
 - Adjustable data columns
 - Option to hide and unhide data whilst viewing
 - Simple 'click and drag' action to change data order
 - Ability to filter data by time, operator, product, trucks, etc
- Find function: enables you to search for specific records by loader, date, location etc
- Exportable information: reports can be printed or exported as CSV format to other programs for data analysis or manipulation
- A user interface that allows you to view the data while selecting, so you know what you are going to get before you export it
- Archiving function: archive old or unwanted data for



storage with the option to retrieve it at a later date for further analysis

- Configuration wizard: helps you to get started and allows you to customize site settings such as your customer list, products handled, loaders operating and site locations
- Secure login: optional password only access
- Comprehensive electronic documentation and help

Loadrite Road Boss Console: The Nuts and Bolts

Note: Specifications may change due to continuous product improvement.

Power Requirements	Supply Voltage 12 to 32 VDC (i.e. designed to operate on 12 or 24 volt systems). Automotive power supply transient suppression exceeds SAE specifications Supply Current 160 mA typical, 350 mA max, 3A max with printer Calibration and Data Back Up Data is stored in a permanent memory and is not affected when the main power is turned off
Display/Keyboard	Display LCD 2 lines of 8 characters, used to display operator messages, and prompts to enter product data etc The large, highly visible, backlit 5 digit numeric display shows lifted weights and totals Keyboard Alphanumeric. Waterproof tactile membrane
Physical	Dimensions 5.7 x 9.4 x 4.3 in. Weight 3.2 lb
Environmental	Operating Temperature 14 F to 122 F Storage Temperature -22 F to 176 F Protection Water and dust protected to IP54 Vibration Qualified to MIL-STD-810D
Accessories	Loadrite Printer

Loadrite MMS: The Nuts and Bolts

Note: Specifications may change due to continuous product improvement.

Memory Capacity	250KB (4000 to 12000 lifts depending on configuration of weigh indicator)
Ambient Temperature	Operating Temperature 14 F to 122 F Storage Temperature 22 F to 176 F
Protection	Water and dust protected to IP68
Computer	Minimum requirements for running Loadrite MMS Software: <ul style="list-style-type: none">• Pentium 166 running at 400MHz• Windows 98 2nd Edition, Windows 2000, Windows Me, Windows XP or greater• 50MB free hard disk space (more may be required if database becomes large)• 128MB RAM• Available COM port or USB port with approved USB-to-RS232 (not included)• CD-ROM drive (for installation)• Internet Protocol (TCP/IP) installed – typically already installed if the PC is on an Ethernet network or has a connection to the internet)

Call your local distributor today to discuss a solution that meets your specific requirements...

United States and Canada

Call free 1 800 528 LOAD

or 1 800 528 5623

Fax: 1 888 519 4479

Email: info@loadritescales.com

www.loadritescales.com

- Full on-site operator training
- Toll free telephone product support
- National and international network of factory-trained distributors
- Used in over 30 countries
- 25 years industry experience



The manufacturer of Loadrite holds ISO 9001:2000 quality management systems certification.

LOADRITE